



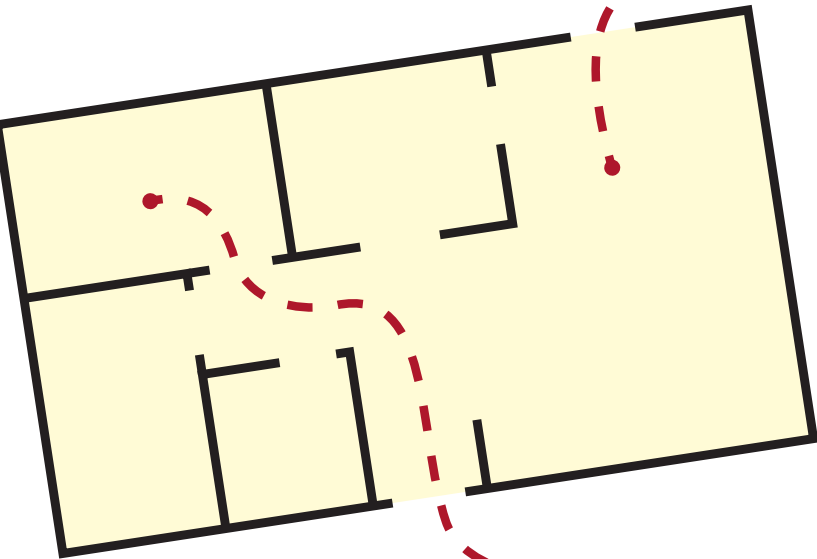
# PLAN TO LIVE KNOW YOUR ESCAPE AND PRACTICE IT!

## Escape Plan Safety Tips

- **Identify two ways out of every room.**
- **Ensure that all windows and doors open easily.**
- **Keep escape routes clear of clutter.**
- **Establish an outside meeting place.**
- **Have two fire/evacuation drills a year.**

## If a Fire Occurs

- **Feel the door; if the door is hot, don't open it. Use your alternate exit.**
- **Leave immediately, closing doors behind, and knock on other doors as you exit.**
- **If you must escape through smoke, crawl low under the smoke keeping your mouth covered.**
- **Get out before phoning for help.**
- **Once you're out, stay out!**
- **Be the **Hero on the Outside** by providing information to firefighters about what/who might be inside.**



## Did You Know?

In the last decade, college students have died in fires because:

- There was only one way out of their room, and it was blocked by the fire.
- Exit signs were covered to create ambience.
- The window used for escape was too small.
- The path to the door was blocked by boxes, bicycles and furniture.

Take all fire alarms seriously.  
Never ignore a fire alarm.

Visit [www.usfa.fema.gov/college](http://www.usfa.fema.gov/college)  
to learn more.